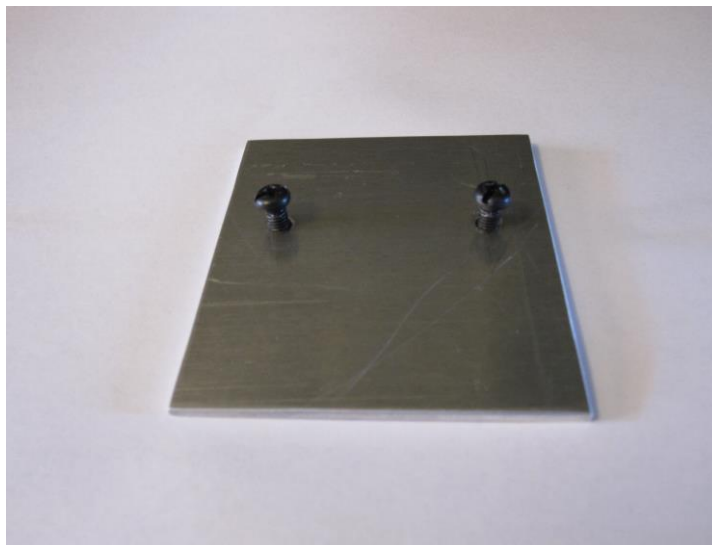


## Installation instructions for DashDAQ-XL: Ford Powerstroke 2008-2012 6.4/6.7 Liter



Screw plate onto DashDAQ ensuring that the speaker side is up, using the top screw holes. Holes on backer plate should be closer to the top at installation. Do not over tighten.

## Installation instructions for nDASH: Ford Powerstroke 2008-2012 6.4/6.7 Liter



**We use the Edge 18303 mount as the base for this install. DO NOT CUT the Edge mount.**

**The plate fits on the inside of the mount while the Dashdaq sits on the outside.**

**Remove the Clip and nut from your existing window suction cup and reinstall on the provided plastic adapter.**

Questions: Send email to [support@dfuser.com](mailto:support@dfuser.com)

**A Dfuser.com LLC Company** 13701 Ranch Road 2338, Georgetown, TX 78633 USA Main: 512-750-7102 Fax: 512-650-3663